



jinkies

Every time I went to a quilt show, my stash of Japanese fabric grew. I designed this tessellation to showcase them. The photo shows a wall hanging about 38" square but, as with all tessellations, you can extend the design as far as you like.

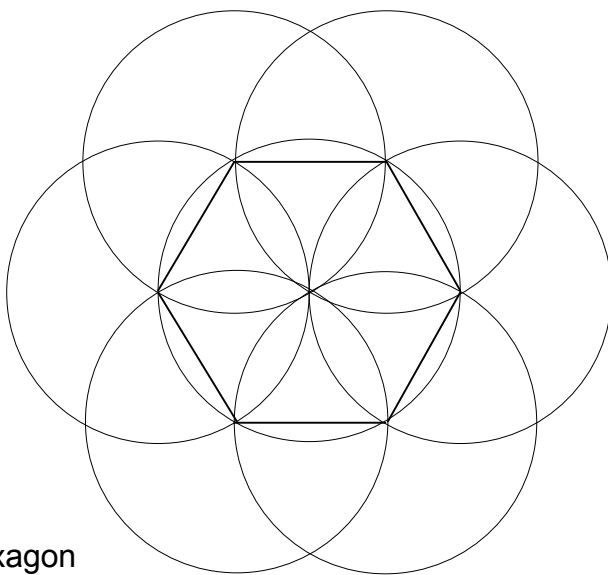
The instructions show you how to draw a hexagon and cut some templates, to cut out and arrange the fabric, to assemble hexagons, and to sew these hexagons together. You then trim this large piece and add a border. The method for cutting this border preserves the fabric's pattern and grain, but is rather wasteful. You may prefer to use the method to cut templates for the border pieces instead.

It is important to mark the right side of the templates, and to keep that side face up, and to keep the fabric face up throughout (except when pressing). It is also important to keep a cool head. The construction is straightforward, the only tricky bit is laying out the fabric pinwheels in step 4. You may find that it helps to colour in the master layout to show your fabric arrangement.

Read the instructions through before you start.

### Fabric requirements

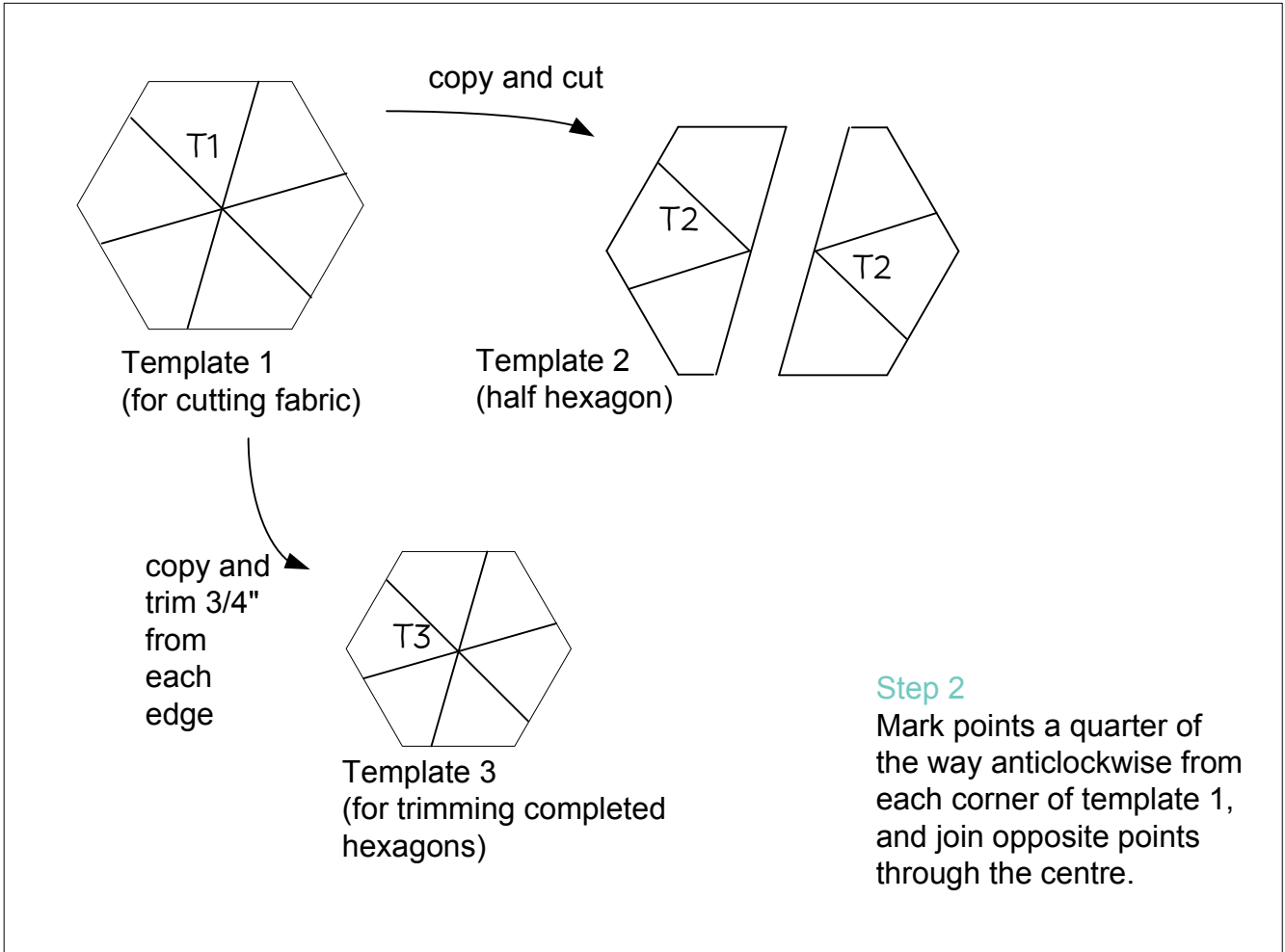
- for the tessellated centre you need a variety of fabrics. It uses 27 hexagons altogether, and you can get four hexagons from a fat quarter. I used 14 different fabrics, cutting one, two or three hexagons from each. I cut a couple more hexagons than I needed so that I could play with the arrangement
- for the border, a 42" square
- you don't need extra fabric for the binding, use the off-cuts from the hexagons, or the off-cuts from the border



Step 1  
Draw a hexagon

### Step 1 Draw a hexagon

Use the flower method to draw a hexagon. Draw your circles with a radius of 5".



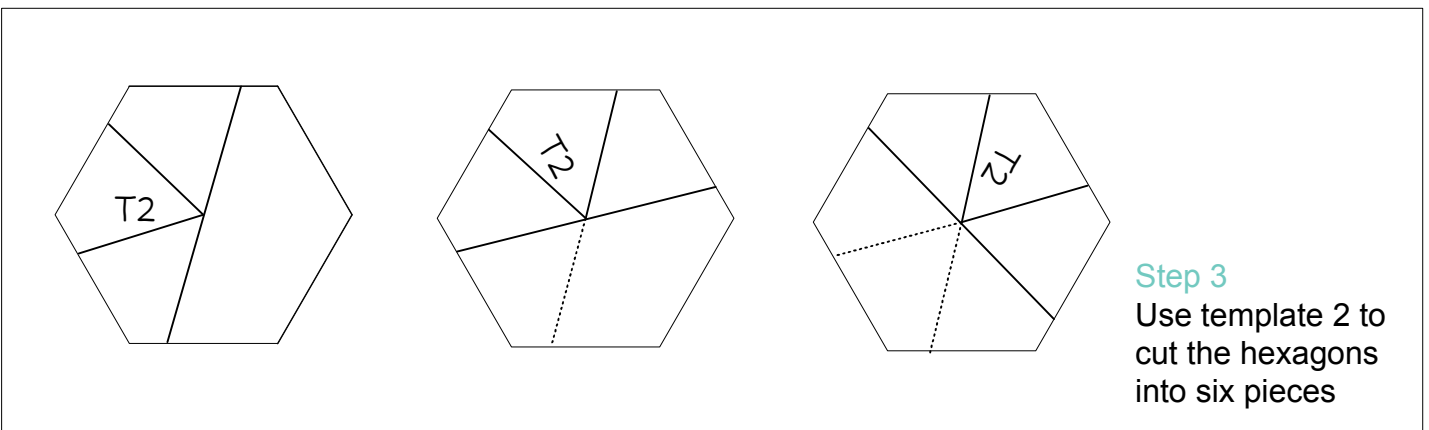
**Step 2 Make the templates**

To make this quilt, you need three templates. Templates 1 and 2 are for cutting the fabric, and template 3 is for trimming the completed hexagons.

**Step 3 Cut out the fabric**

Keep the fabric right side up throughout!

Cut out fabric hexagons using template 1, and slice them using template 2.





jinkies

**Step 4**  
Arrange the pieces into pinwheels

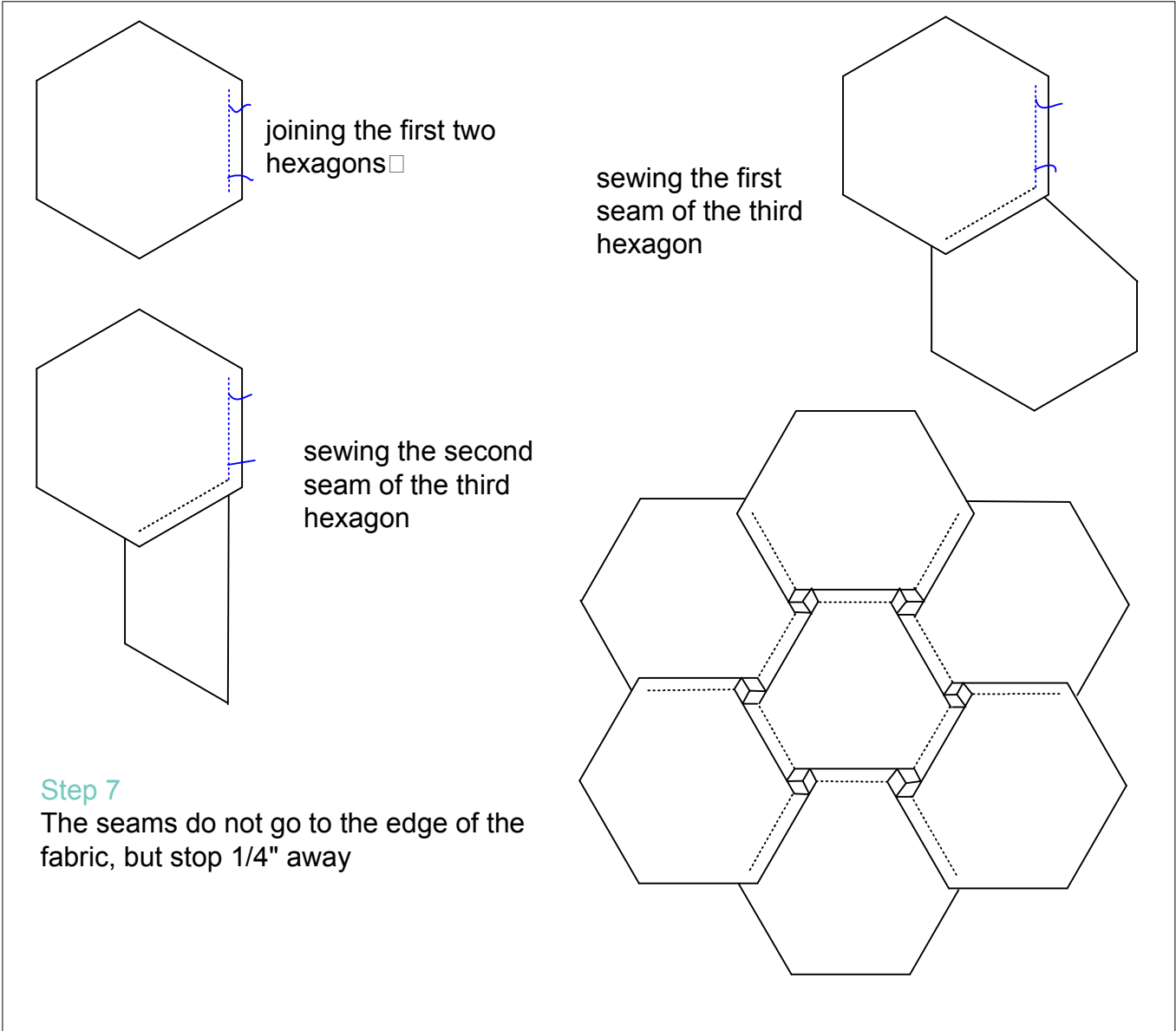
**Step 5**  
Sew seams from the centre outwards

**Step 4 Arrange the pieces**  
Study the master layout and the photo of the quilt to see how to arrange the pieces.  
Keep a cool head!

**Step 5 Make the hexagons**  
Sew the six pieces of each hexagon together in the order shown. Match the inner points. The outer edges will not match.

**Step 6**  
Press the seam allowances anticlockwise, opening them out and flattening them at the centre, turn face up, and then trim using template 3

**Step 6 Press and trim**  
Press the seam allowances as shown. Match the lines on template 3 to the seams as well as you can, and trim each hexagon.



**Step 7 Join the hexagons**

Sew the hexagons together, making sure that the seams do not go to the edge of the fabric, but stop 1/4" away. Backstitch a little at each end of the seams.

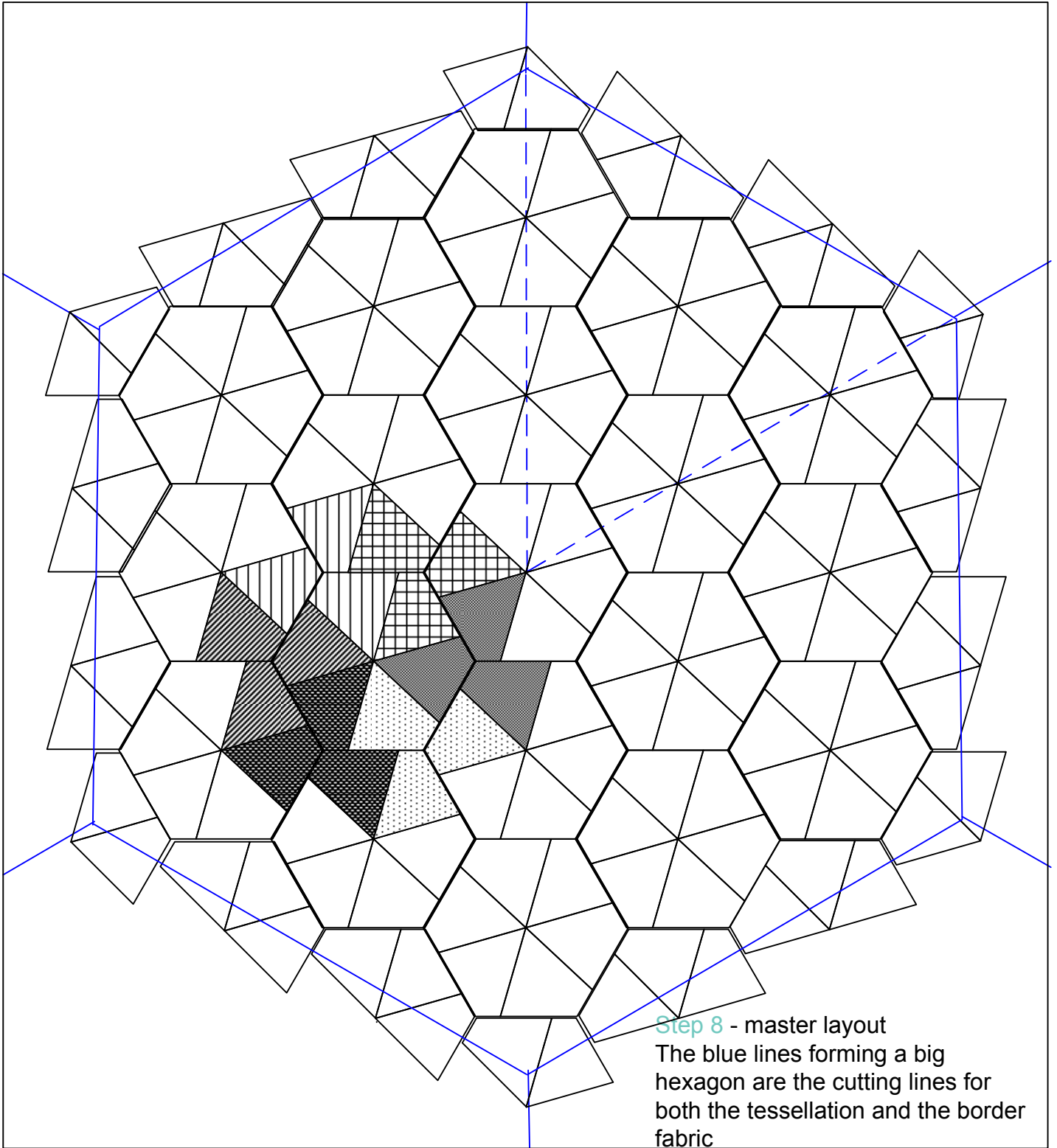
Keep all other pieces and seam allowances out of the way!

I prefer to sew towards previous stitching if possible, as then I can see where to stop.

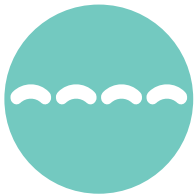
Press the seam allowances as shown, opening them out and flattening them where the hexagons meet.



jinkies



Step 8 - master layout  
The blue lines forming a big hexagon are the cutting lines for both the tessellation and the border fabric



jinkies

## Step 8 Add the border

Trim the completed tessellation into a large hexagon and place this on top of the border fabric. The large hexagon need not be centred nor lined up with the edge of the border fabric. I chose to centre mine, but set it skew.

Cut the border fabric around the hexagon. Do not extend the cuts beyond the corners of the large hexagon!

Line up a straight edge with the centre of the large hexagon and a corner. Cut the border fabric from the corner to the edge. Repeat for each corner.

You do not need to add seam allowances!

Sew each border piece to the large hexagon using the method in step 7. The outer edges of the radial seams will not match.



## Step 9 Finish

Square off the finished piece, layer, quilt and bind.

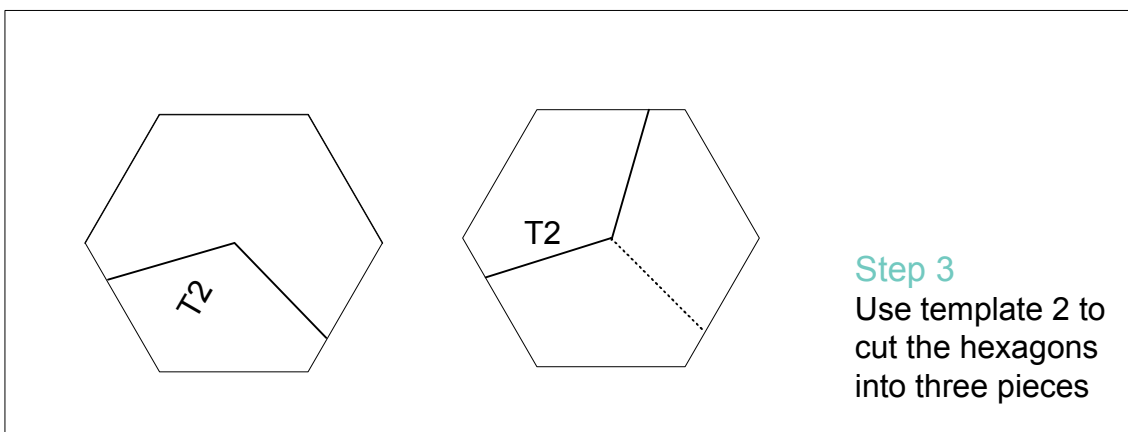
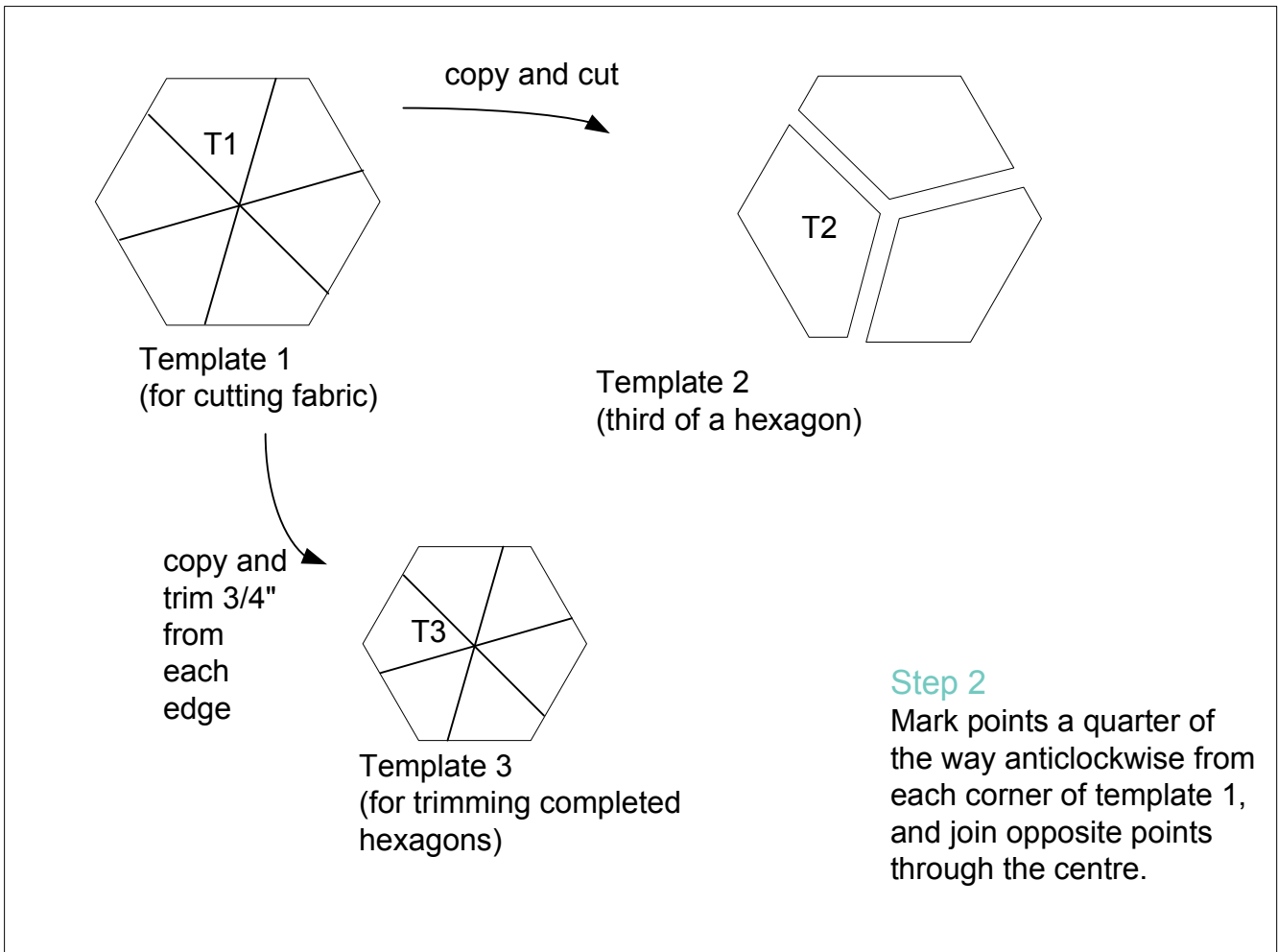
I chose a simple sashiko pattern for the quilting, one that uses long, unbroken lines. I made a pieced binding from the scraps left over from cutting out the first hexagons.

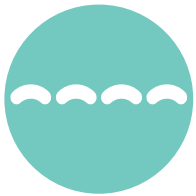
jinkies  
2003



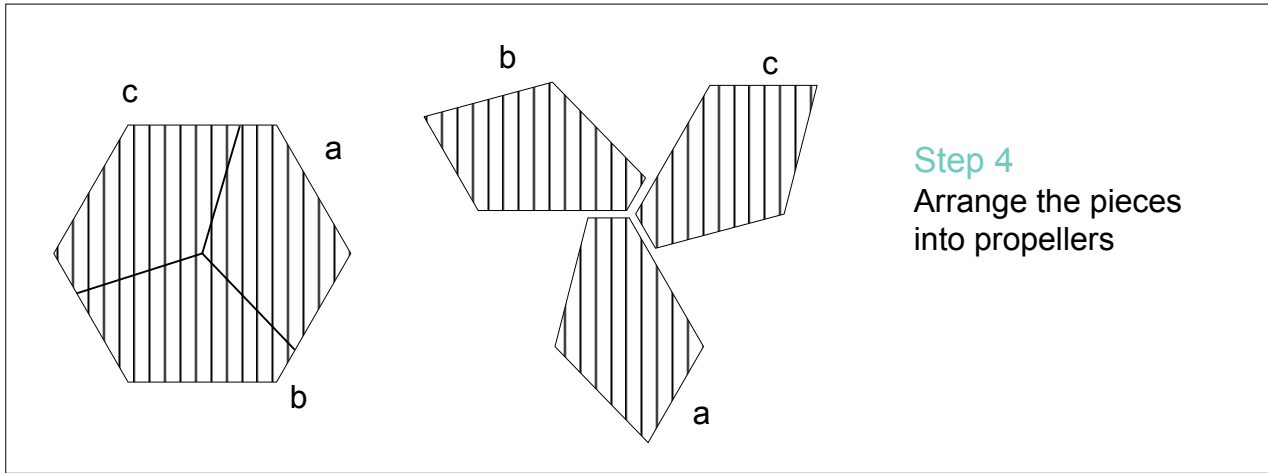
jinkies - variation

Step 1 as before

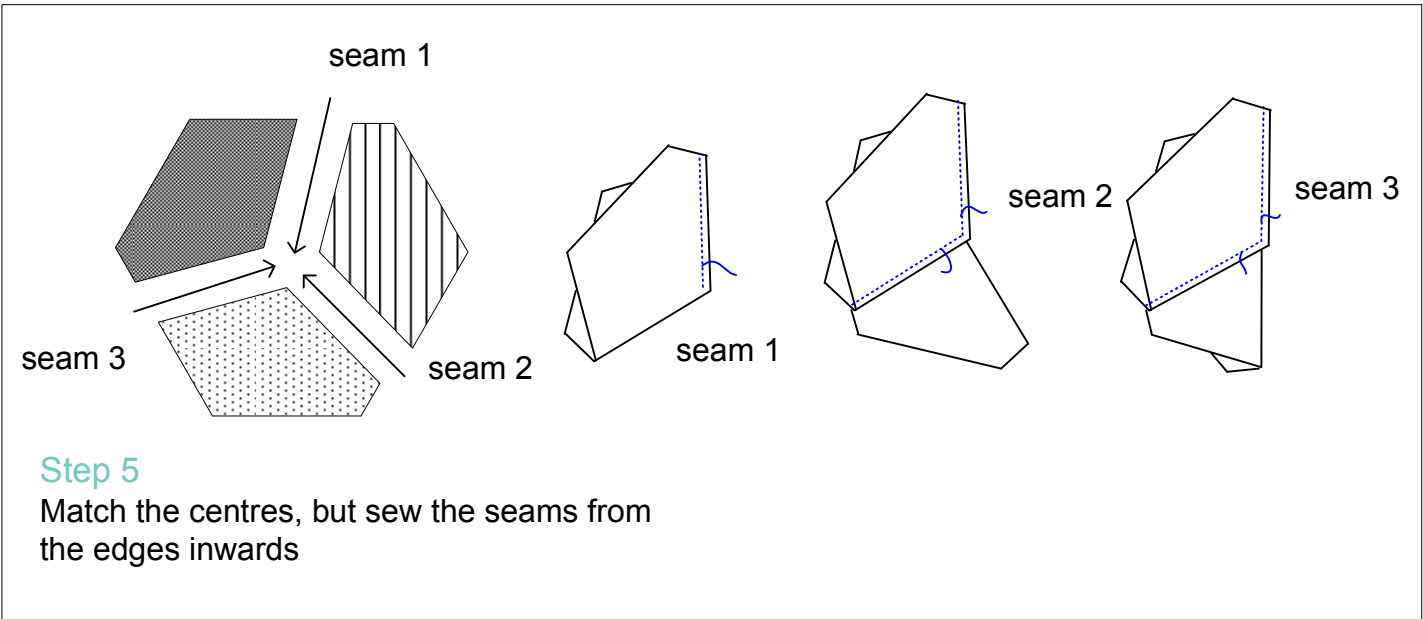




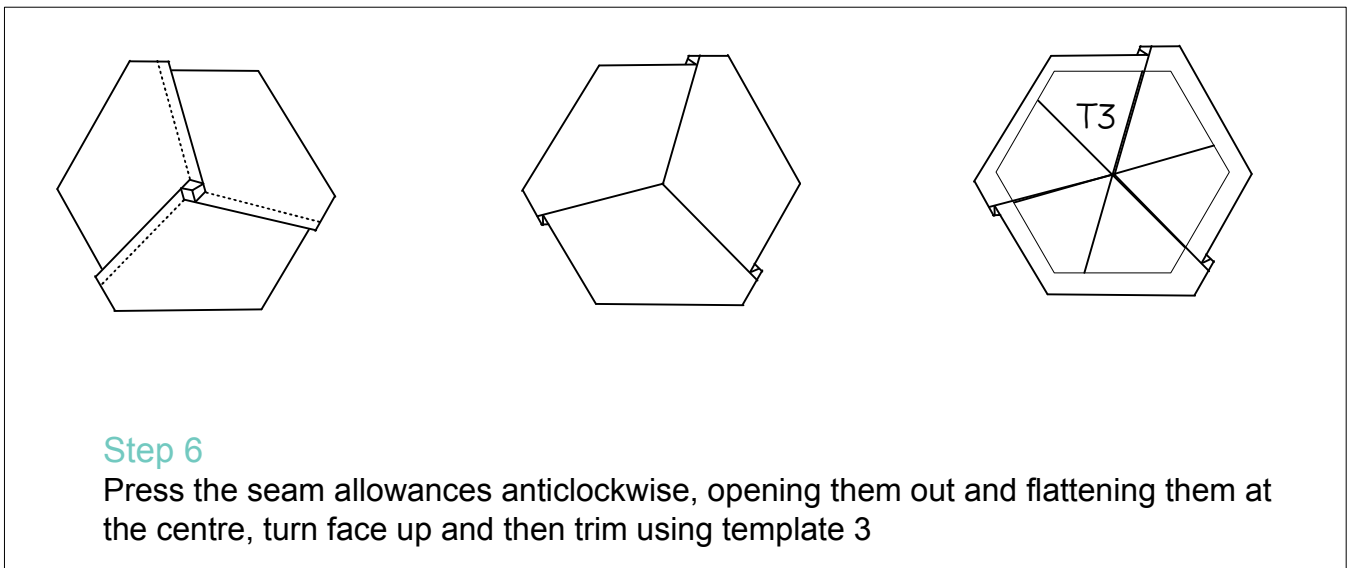
jinkies - variation



**Step 4**  
Arrange the pieces into propellers



**Step 5**  
Match the centres, but sew the seams from the edges inwards

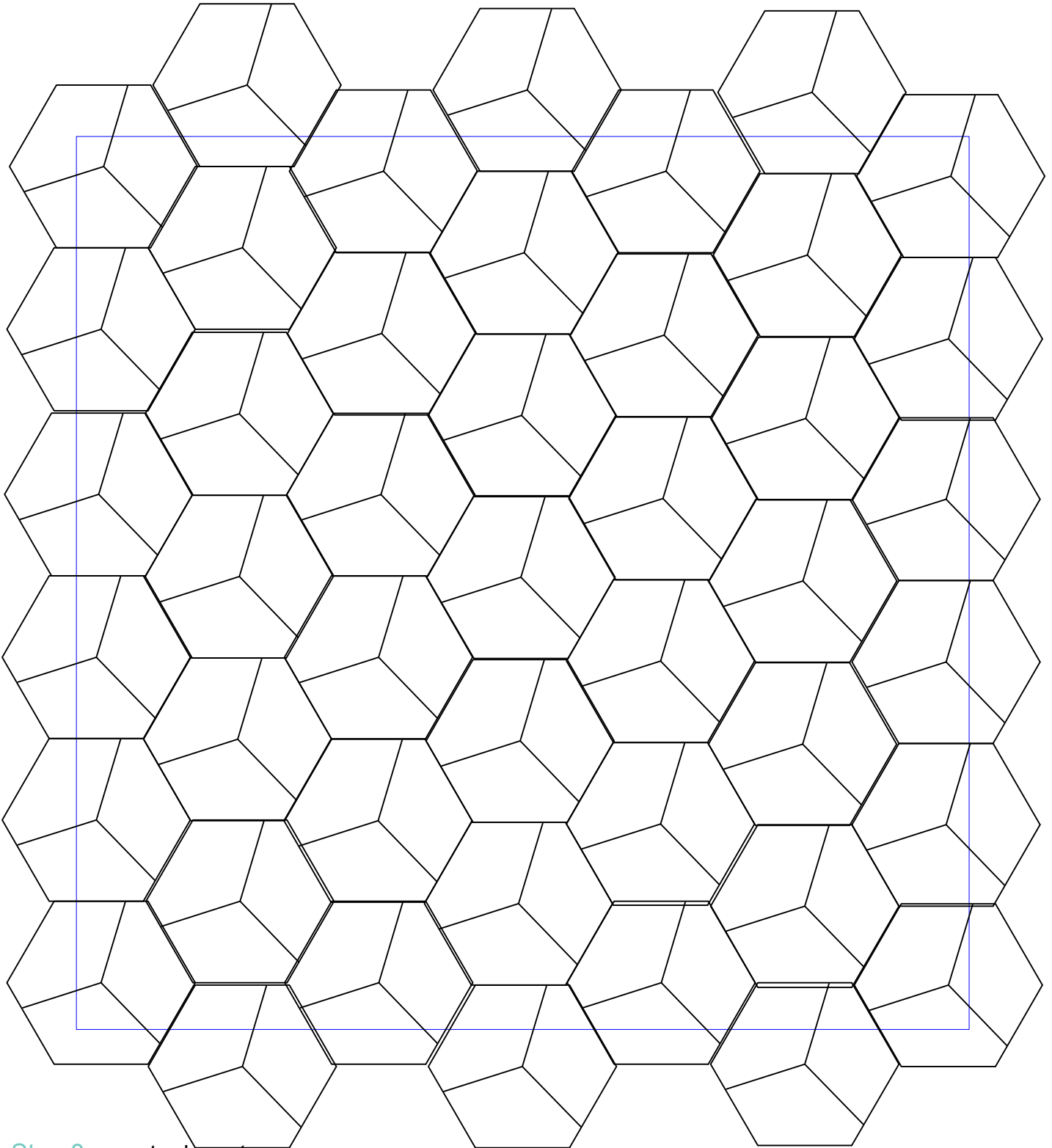


**Step 6**  
Press the seam allowances anticlockwise, opening them out and flattening them at the centre, turn face up and then trim using template 3



# jinkies - variation

Step 7 as before



Step 8 - master layout

The blue lines shows where you could trim the piece to a large square

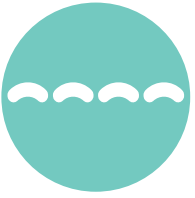


jinkies - variation



jinkies

2003



jinkies – more variations





jinkies – more variations





jinkies – more variations

